

Compliance Manager

DATASHEET (iSecurity Suite Auditing & Response)



Security levels per Object

The challenge of securing both Native and Integrated File System (IFS) OS/400 objects is the basis for all IBM i security due to the unique object-based architecture.

The architecture of the operating system and the fact that user-rights for accessing objects are checked for all operations, whether batch, interactive or over-the-web. Since OS/400 requires authorizations to be defined per each object in the system, this activity is cumbersome, error-prone and difficult to maintain.

Helps system administrators to secure IFS and Native object security

iSecurity Compliance Management solution helps system administrators to painlessly secure IFS and Native object security.

It allows to easily plan the desired security based on object name and type and to check for inconsistencies between actual and planned object security settings.

- Reduces non-compliance with company defined security policy settings
- Assures settings for object security are not changed and can be combined with iSecurity Audit
- Assures audit and compliance that the data is secure
- User-friendly green screen and GUI interfaces

| Library | Object | Type | Attribute | System | Authority list | Owner | Primary group | Audit value | Private Rules | Explanation |
|---------|------------|---------|-----------|--------|----------------|------------|---------------|-------------|---------------|-------------------------|
| SMZJ | JADUMP | *DTAARA | *ALL | SS20 | *NONE | | *NONE | Yes | | Rule created by wizard. |
| SMZJ | JRREL | *DTAARA | *ALL | SS20 | *NONE | | *NONE | Yes | | Rule created by wizard. |
| SMZJ | *ALL | *FILE | *ALL | SS20 | *NONE | | *NONE | Yes | | Rule created by wizard. |
| SMZJ | GSLCKMNU | *MENU | DSPF | SS20 | SECURITY4P | | *NONE | Yes | | Rule created by wizard. |
| SMZJ | JDMAIN | *MENU | DSPF | SS20 | SECURITY4P | | *NONE | Yes | | Rule created by wizard. |
| SMZJ | JRBLIR | *MENU | DSPF | SS20 | SECURITY4P | | *NONE | Yes | | Rule created by wizard. |
| SMZJ | JRDAPP | *MENU | DSPF | SS20 | SECURITY4P | | *NONE | Yes | | Rule created by wizard. |
| SMZJ | JRDFILE | *MENU | DSPF | SS20 | SECURITY4P | | *NONE | Yes | | Rule created by wizard. |
| SMZJ | JRDESET | *MENU | DSPF | SS20 | SECURITY4P | | *NONE | Yes | | Rule created by wizard. |
| SMZJ | JRMAIN | *MENU | DSPF | SS20 | *NONE | | *NONE | Yes | | Rule created by wizard. |
| SMZJ | JRMINMTM | *MENU | DSPF | SS20 | SECURITY4P | | *NONE | Yes | | Rule created by wizard. |
| SMZJ | JRSETMIN | *MENU | DSPF | SS20 | SECURITY4P | | *NONE | Yes | | Rule created by wizard. |
| SMZJ | JRRTK | *MENU | DSPF | SS20 | *NONE | | *NONE | Yes | | Rule created by wizard. |
| SMZJ | JRTRGR | *MENU | DSPF | SS20 | *NONE | | *NONE | Yes | | Rule created by wizard. |
| SMZJ | JRWAPP | *MENU | DSPF | SS20 | *NONE | | *NONE | Yes | | Rule created by wizard. |
| SMZJ | JRWRPRT | *MENU | DSPF | SS20 | *NONE | | *NONE | Yes | | Rule created by wizard. |
| SMZJ | *ALL | *MSGF | DSPF | SS20 | *NONE | | *NONE | Yes | | Rule created by wizard. |
| SMZJ | *ALL | *PGM | DSPF | SS20 | *NONE | | *NONE | Yes | | Rule created by wizard. |
| SMZJ | FSLDTAFM | *PNLGRP | *ALL | SS20 | *NONE | | *NONE | Yes | | Rule created by wizard. |
| SMZJ | GSEPWDFM | *PNLGRP | *ALL | SS20 | *NONE | | *NONE | Yes | | Rule created by wizard. |
| SMZJ | GSNLGOFM | *PNLGRP | *ALL | SS20 | *NONE | | *NONE | Yes | | Rule created by wizard. |
| SMZJ | GSRPTFM | *PNLGRP | *ALL | SS20 | *NONE | | *NONE | Yes | | Rule created by wizard. |
| SMZJ | GSRPTGFM | *PNLGRP | *ALL | SS20 | *NONE | | *NONE | Yes | | Rule created by wizard. |
| SMZJ | JRIPV6F | *SRVPGM | CLE | SS20 | *NONE | | *NONE | Yes | | Rule created by wizard. |
| SMZD | PRV | *PGM | *ALL | *ALL | *NONE | SECURITY8P | *NONE | Yes | | Rule created by wizard. |
| SMZ4 | RLSNDM* | *PGM | *ALL | *ALL | *NONE | SECURITY4P | *NONE | Yes | | Rule created by wizard. |
| SMZ2 | EDTFSUSSPC | *CMD | *ALL | SS20 | *NONE | | *NONE | Yes | | Rule created by wizard. |
| SMZ2 | DEMOOTAARA | *DTAARA | *ALL | SS20 | *NONE | | *NONE | Yes | | Rule created by wizard. |

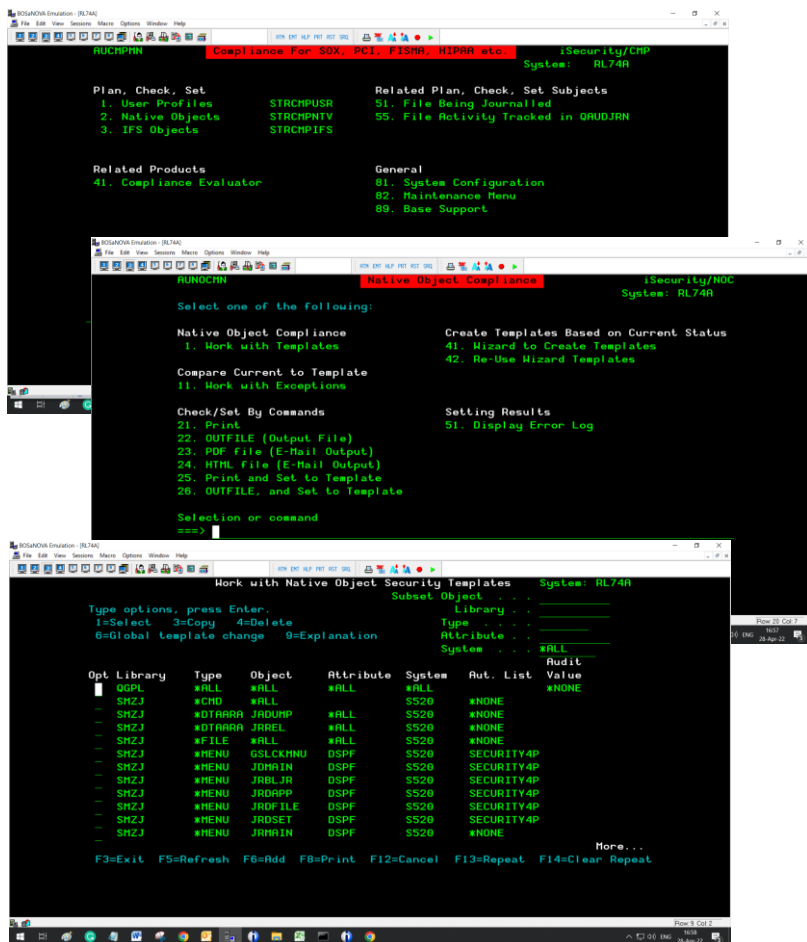
Key Features

- Full control of all related parameters and resources: Owners, Authorization lists, User authorities, Primary Groups, Object auditing and more.
- Specific user authorities can be added or can replace existing ones.
- IFS object security plans are based upon object name, type, and attribute.
- Native object security plans are based upon object type and generic names.
- Multiple Systems (LPARs) definitions with exceptions can be entered to same repository
- Easily Check and Display differences between current security definitions and the planned security definitions

Advantages of using Compliance Manager

iSecurity Compliance Manager provides an easy facility to set system-wide objects rights in accordance with pre-defined templates and includes full reporting features.

- Site-specific definitions for multi-site, complex organizations
- Set current security status to the planned definitions
- Full reporting includes support for OUTFILE



Installation Requirements

- Operating system 7.1 or higher
- 300 MB of disk space for initial installation

Let's Get Started

Schedule your Demo and secure Native and Integrated File System (IFS) OS/400 objects with the iSecurity Compliance Manager