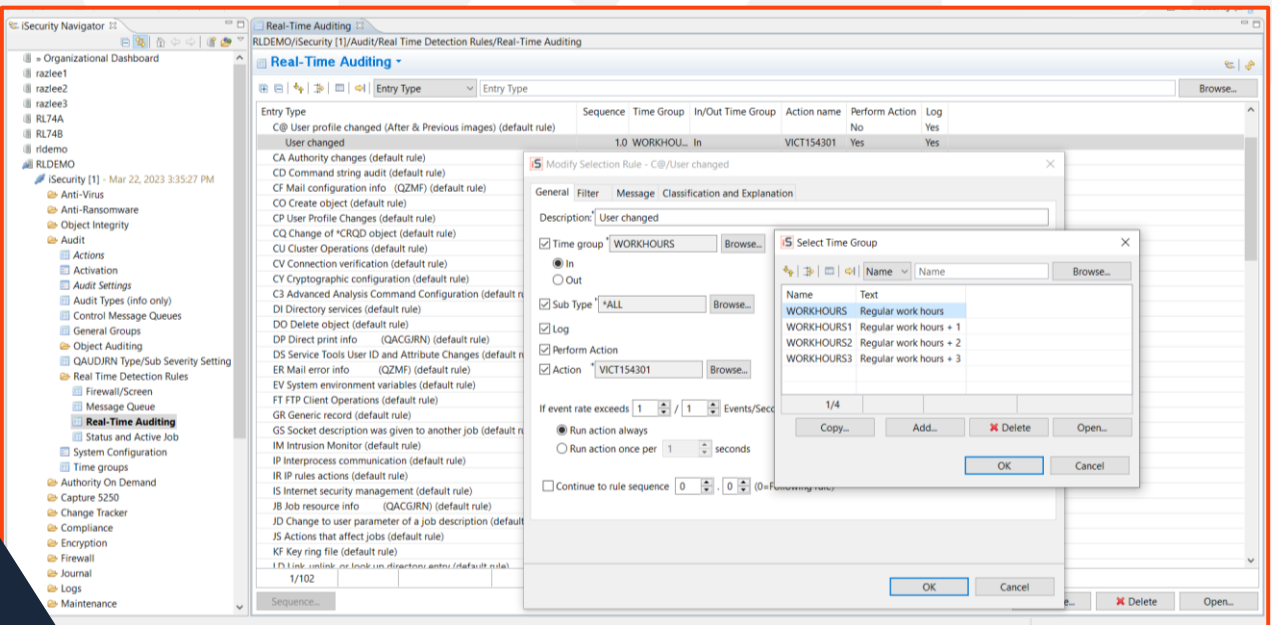
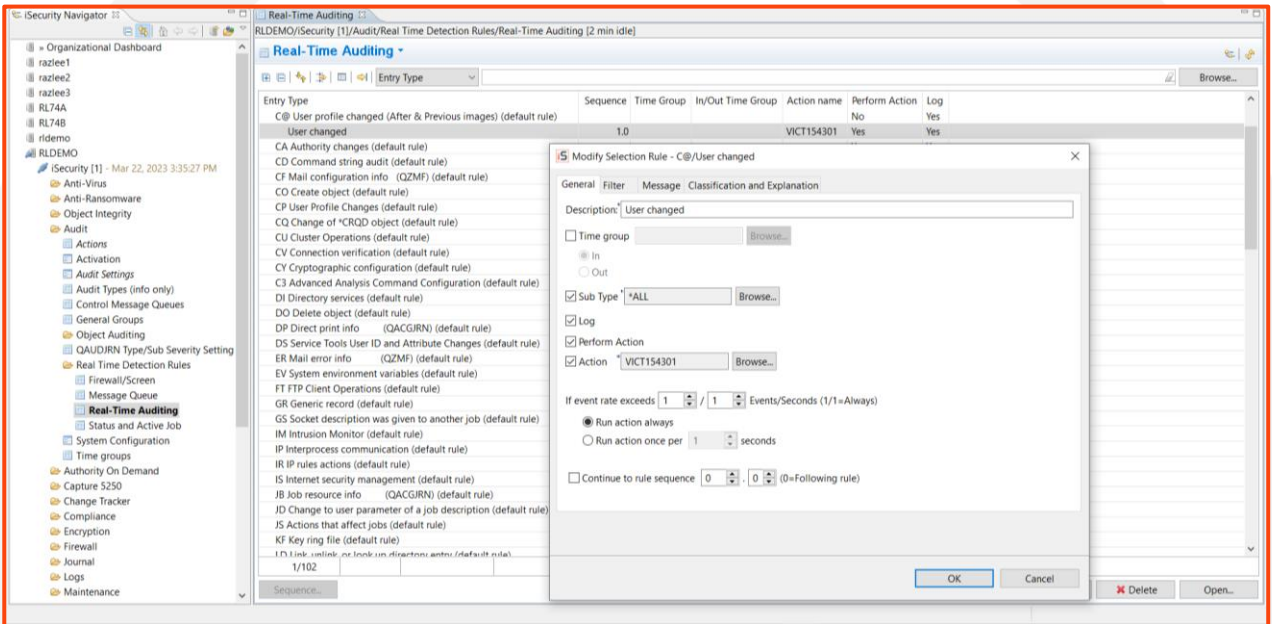


### Graphic User Interface for iSecurity Suite

GUI integrates information from varied sources across multiple environments into a single display.

iSecurity GUI makes it easier for even non IBM i administrators and managers to configure and use the iSecurity Suite of solutions. Forensic accountants can easily access critical information for review. Users can get very specific security related data, and view or analyze this information with little or no effort. iSecurity GUI is provided free to customers that license other iSecurity modules.



## Key Features

- User friendly and intuitive
- A single pane view of information from multiple environments
- Access and control multiple LPARs/Machine
- Full iSecurity admin functionalities via your PC
- View report contents via a GUI table or PC tools
- Integrates with all the iSecurity Suite Products

## Web GUI Key Features

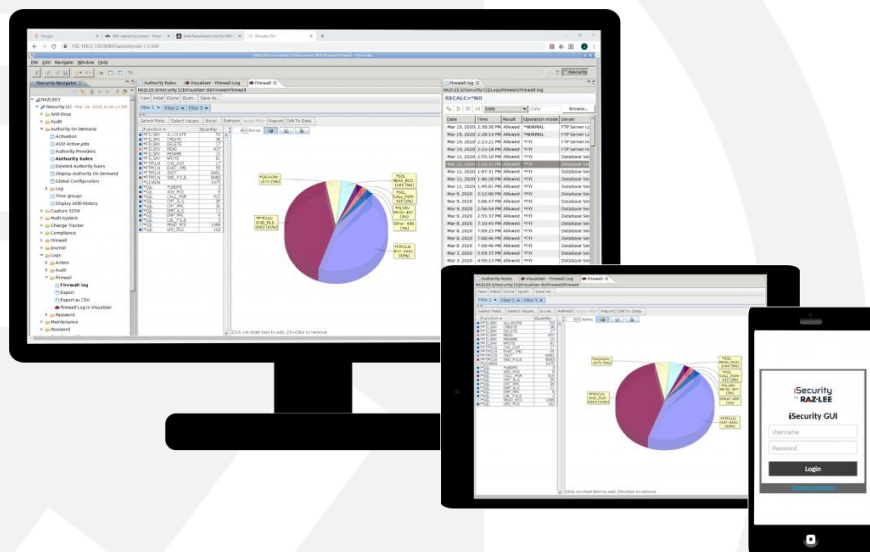
- Web GUI is completely agent less
- Multilingual: Spanish, German, French, Japanese and English
- Timeout controls lock the session, requiring re-identification
- Connections to the IBM i systems are persistent. No need to reconnect
- Easy to display or hide the navigator or data panes on tablets and smartphones
- Auditor can use iSecurity in auditor mode, without installing anything

## iSecurity WEB GUI

iSecurity Web GUI is an agentless interface that runs the regular iSecurity GUI in a web browser.

With Web GUI, IBM i System Administrators can utilize the full depth of iSecurity components including **Firewall, Audit, SIEM, Compliance, Authority on Demand, Anti Virus, Anti Ransomware, Capture, Change Tracker, AP Journal** and more.

It also supports the use of Visualizer, the integrated Business Intelligence component for instantaneous analysis of security information.



It has been tested on various browsers including **Chrome, Firefox, and Edge.**

## Let's Get Started

Schedule your Demo and start Evaluating, Reporting & Alerting on your Systems with iSecurity GUI.