

RAZ-LEE

GUI

Graphical User Interface

About Raz-Lee Security

Founded in 1983, Raz-Lee Security is one of the world's leading independent owned cybersecurity and compliance solution providers for IBM i servers (AS/400).

Raz-Lee's flagship iSecurity suite guards organizations against insider threats and unauthorized external access to business-critical information hosted on their IBM i. We have developed cutting-edge solutions that have revolutionized analysis and fortification of IBM i servers.

We build solutions that work with other companies' technologies allowing organizations to monitor IBM i activity via SIEM or DAM dashboards.

Technology Business Partners



About iSecurity Suite

Advanced Threat Protection

- Anti-Ransomware
- Antivirus / Malware protection
 - ICAP Optional Client/Server for Antivirus

Authentication & Authorization

- MFA Multi Factor Authentication
- Self Password Reset
- Authority On Demand

Protection

- Firewall FTP, ODBC...access
- Monitor CL Commands
- Safe-Update to protect production files

Evaluation, Reporting & Alerts

SIEM & DAM Support

Syslog, SNMP, CEF, LEEF

Visualizer

Business Intelligence for Security

Score Cards

for GDPR, SOX, PCI, HIPAA...

Security Investigator

Data Discovery, Authority Inspector, Assessment

Encryption

- DB2 Field Encryption (FIELDPROC)
- PGP File Encryption

Data Base Solutions

- AP-Journal DB Audit, Filter, Alerts, SIEM
- DB-Gate Native SQL to Oracle, MSSQL...
- FileScope Secured file editor

Auditing & Response

- Audit Journal, System Values, Status...
- Proactive re-Action in real time
- Capture screen activity
- Compliance of Users, Objects, IFS
- Change Tracker watch Production Libraries

GUI

Graphical User Interface

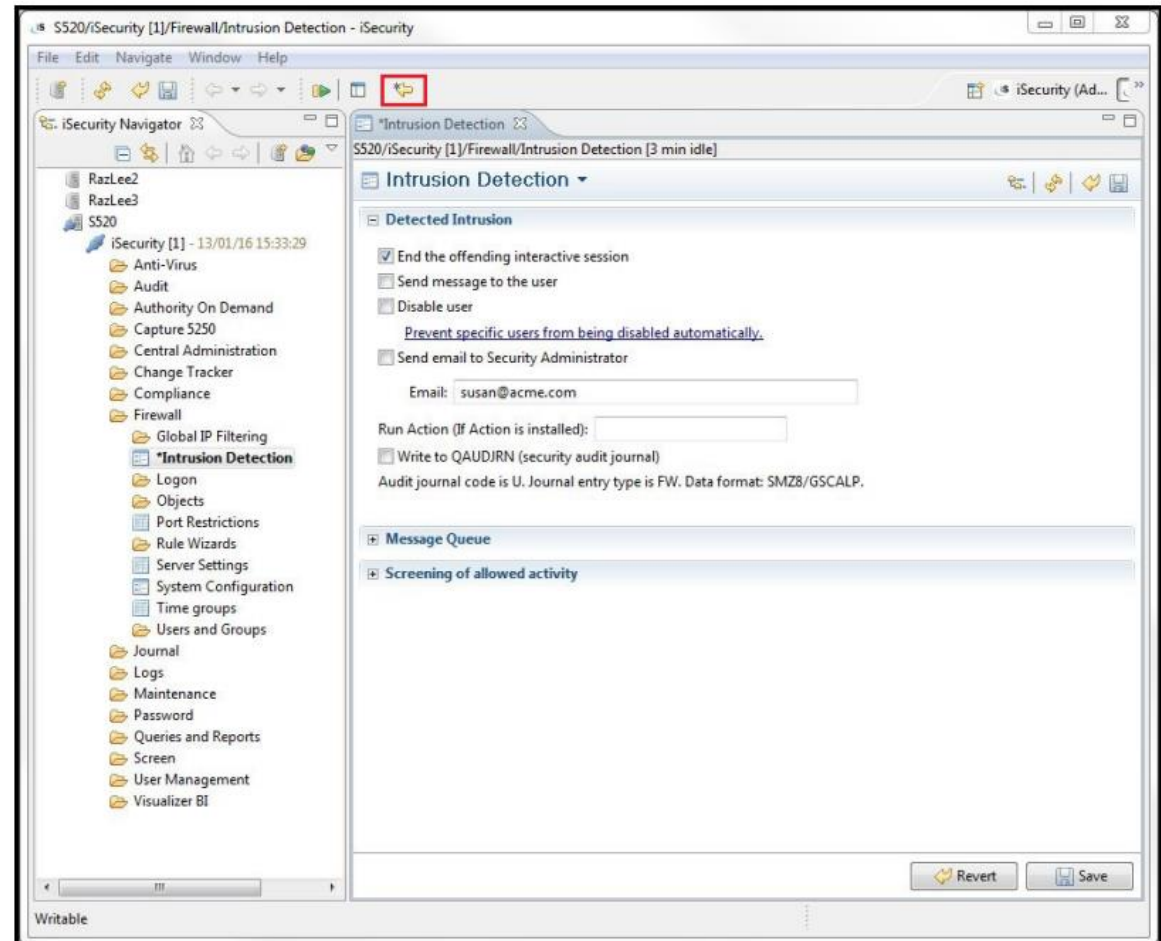
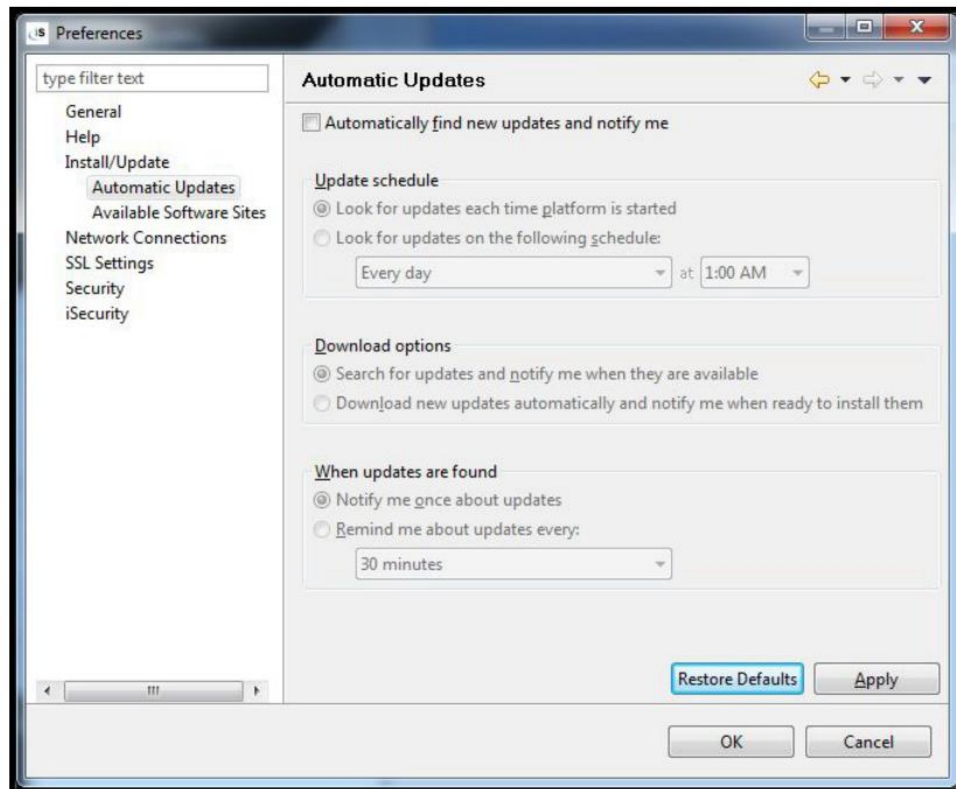
Graphic User Interface

GUI makes it easier for even non-IBM i administrators and managers to configure and use the iSecurity Suite of solutions. GUI integrates information from varied sources across multiple environments into a single display.

- Forensic accountants can easily access critical information for review.
- Users can get very specific security-related data, and view or analyze this information with little or no effort.
- iSecurity GUI is provided free to customers that license other iSecurity modules.

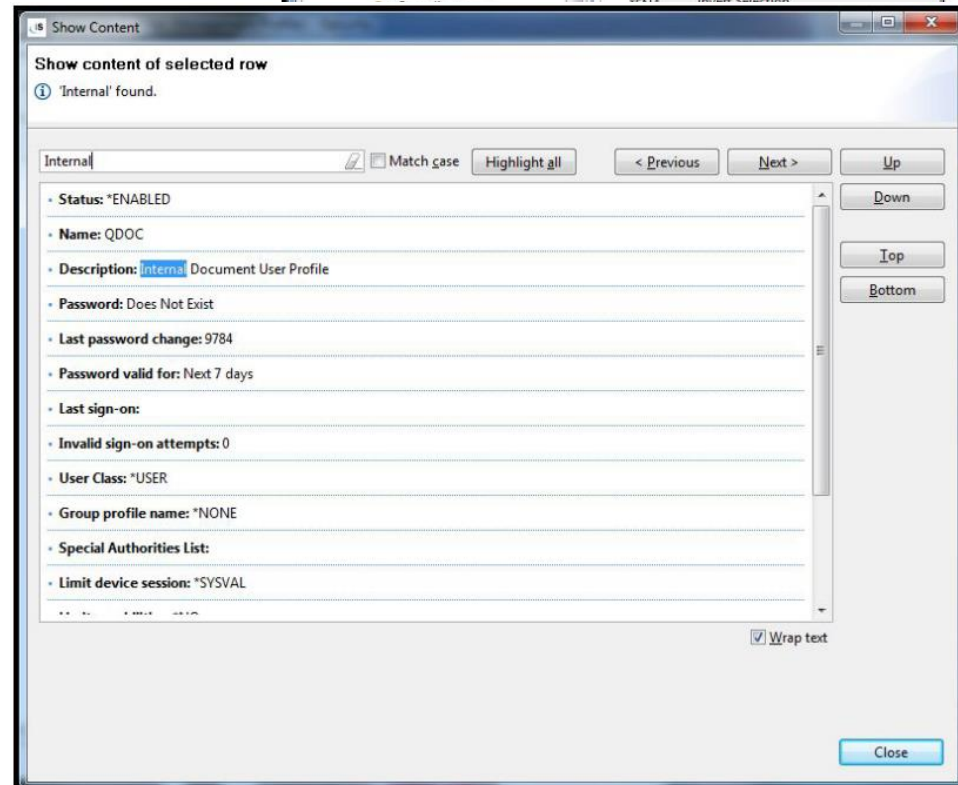
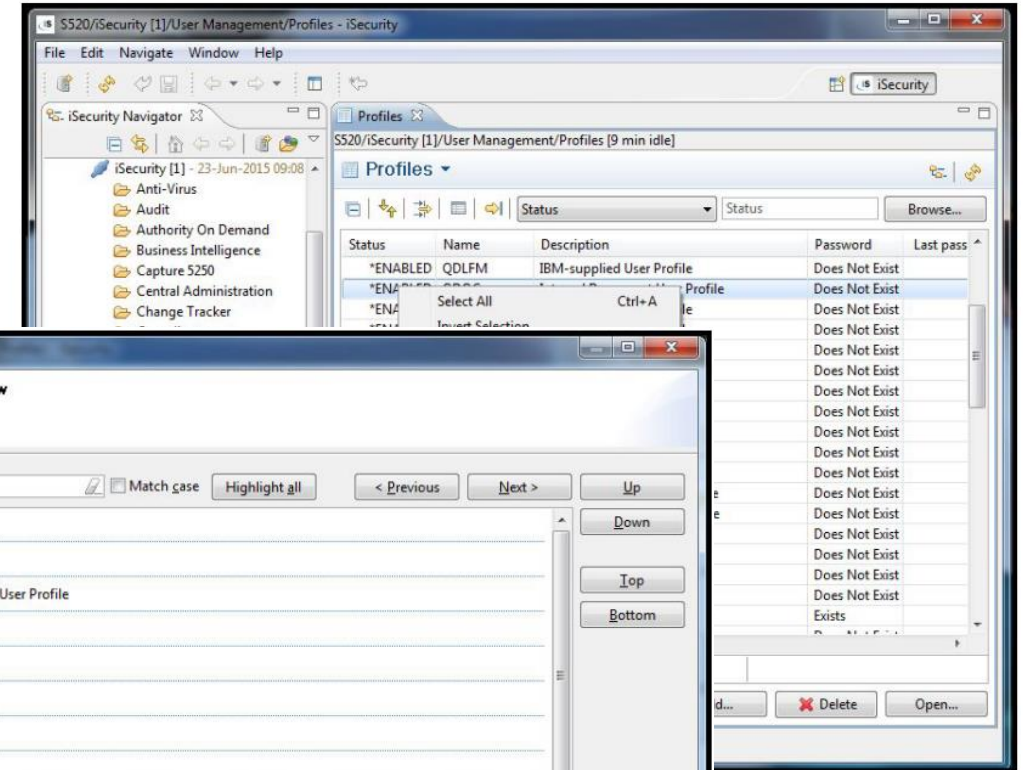
iSecurity GUI

Our Graphic User Interface allows you to manage everything across iSecurity Suite. The best way to make management from a windows PC not having to enter the IBM Green Screen.



iSecurity GUI Key Features

- User-friendly and intuitive.
- A single-pane view of information from multiple environments.
- Access and control multiple LPARs/Machine.
- Full iSecurity admin functionalities via your PC.
- View report contents via a GUI table or PC tools.
- Integrates with all iSecurity Suite Products.



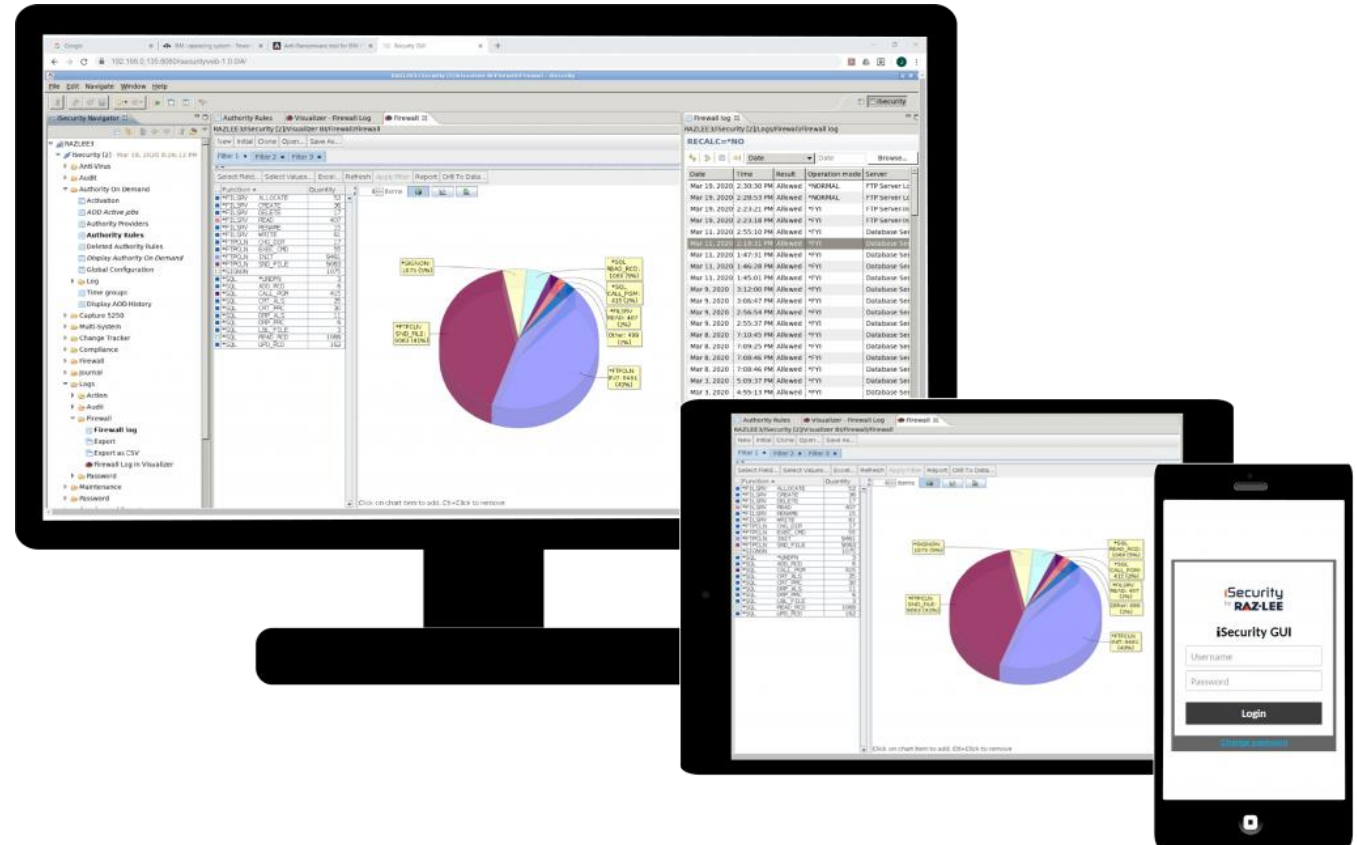
iSecurity Web GUI

iSecurity Web GUI is an agent-less interface that runs the regular iSecurity GUI in a web browser.

- With Web GUI, IBM i System Administrators can utilize in full depth iSecurity components including Firewall, Audit, SIEM, Compliance, Authority-on-Demand, Anti-Virus, Anti-Ransomware, Capture, Change-Tracker, AP-Journal and more. It also supports the use of Visualizer, the integrated Business Intelligence component for instantaneous analysis of security information.
- It has been tested on various browsers including Chrome, Firefox, and Edge.

iSecurity Web GUI Key Features

- Web-GUI is completely agent-less.
- Multilingual: Spanish, German, French, Japanese and English.
- Timeout controls lock the session, requiring re-identification.
- Connections to the IBM i systems are persistent. No need to reconnect.
- Easy to display or hide the navigator or data panes on tablets and smartphones.
- Auditor can use iSecurity in auditor-mode, without installing anything.



RAZ-LEE

Thank You

For more information about our company and products please visit
www.razlee.com