

**RAZ-LEE**

**VISUALIZER**

Graphical Business Intelligence



# About Raz-Lee Security

---

Founded in 1983, Raz-Lee Security is one of the world's leading independent owned cybersecurity and compliance solution providers for IBM i servers (AS/400).

Raz-Lee's flagship iSecurity suite guards organizations against insider threats and unauthorized external access to business-critical information hosted on their IBM i. We have developed cutting-edge solutions that have revolutionized analysis and fortification of IBM i servers.

We build solutions that work with other companies' technologies allowing organizations to monitor IBM i activity via SIEM or DAM dashboards.

## Technology Business Partners

---



# About iSecurity Suite

## Advanced Threat Protection

- Anti-Ransomware
- Antivirus / Malware protection
  - ICAP Optional Client/Server for Antivirus

## Authentication & Authorization

- MFA Multi Factor Authentication
- Self Password Reset
- Authority On Demand

## Protection

- Firewall FTP, ODBC...access
- Monitor CL Commands
- Safe-Update to protect production files

## Evaluation, Reporting & Alerts

### SIEM & DAM Support

Syslog, SNMP, CEF, LEEF

### Visualizer

Business Intelligence for Security

### Score Cards

for GDPR, SOX, PCI, HIPAA...

### Security Investigator

Data Discovery, Authority Inspector, Assessment

## Encryption

- DB2 Field Encryption (FIELDPROC)
- PGP File Encryption

## Data Base Solutions

- AP-Journal DB Audit, Filter, Alerts, SIEM
- DB-Gate Native SQL to Oracle, MSSQL...
- FileScope Secured file editor

## Auditing & Response

- Audit Journal, System Values, Status...
- Proactive re-Action in real time
- Capture screen activity
- Compliance of Users, Objects, IFS
- Change Tracker watch Production Libraries

# Visualizer

Graphical Business Intelligence

# Business Intelligence

---

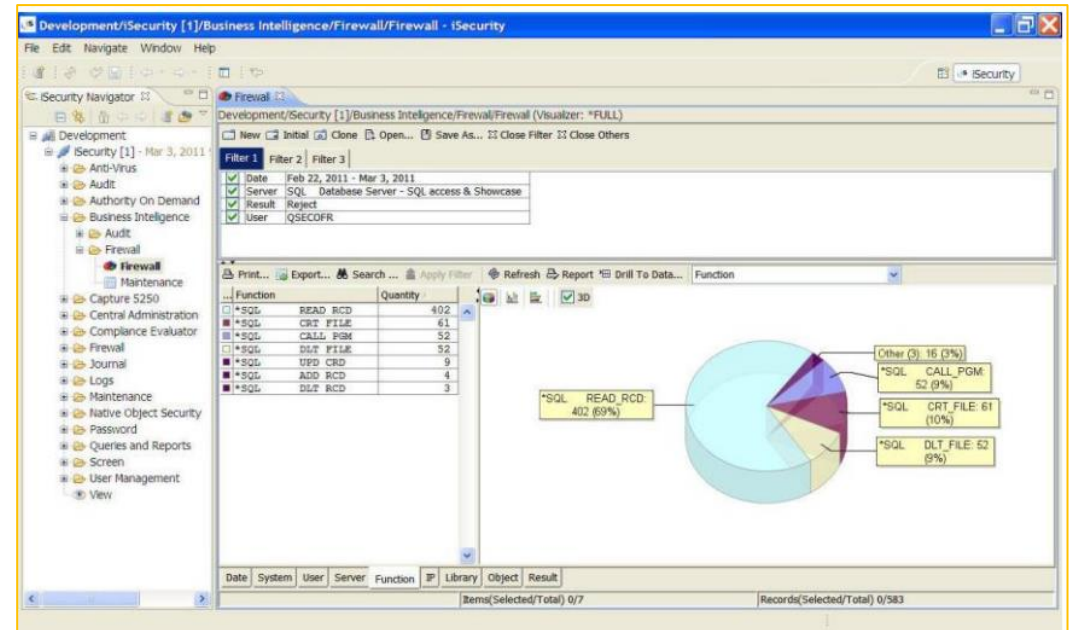
Make an analysis of millions of log entries is a task that cant be done manually, and not many tools in the market are designed to do it on IBM i.

- To be able to take Management must ensure that security polices and procedures are properly implemented and enforced. In addition, managers must be able to evaluate and test the effectiveness of these policies on a continuing basis.
- iSecurity Visualizer solves that problem and more. It enhances native IBM i auditing by adding several robust new features and providing user-friendly interface for working with the large, often confusing number of system values and parameters.

# Display and Analysis of Data

Business Intelligence System for display and analysis of data from the IBM i server. It allows IT managers and system administrators to graphically analyze IBM i security related activities instantaneously and without OS/400 technical knowledge.

- Exceptionally fast “slice and dice” technology
- Report generator creates statistical reports with rich graphics
- Automatically associates all significant data elements
- Easily filter data to “drill down” into log files
- Set up multiple filter criteria and reuse as necessary
- Operates with other iSecurity products and with any SQL table



# Business Intelligence for IBM i

---

Visualizer is an Eclipse-based product which makes security-related investigation and analysis a snap, even for technologically challenged users.

The user simply clicks to select filters and a 3D pie chart, or similar graphics, appears in moments and shows the exact breakdown by the selected criteria.

- Extract the information you need for cross-correlation data analysis, comparison and investigation.
- Replaces time-consuming and error-prone batch job executions.
- Extract log data fitting your specific needs instantaneously.
- Graphical representation of security-related activities.
- Quickly analyze and monitor important User Profile information such as passwords, disabled/enabled status, User Class, special authorities, etc.

# Monitoring User Profiles Graphically

---

Special functionality has been added to Visualizer to assist in visually analyzing User Profile attributes instantaneously!

- Visualizer interfaces to iSecurity products such as Audit, Firewall, AP-Journal and FileScope to help in finding the “needle in the haystack” when investigating possible security breaches or other critical system activity.
- This feature is especially useful to System Administrators and Help Desk personnel in managing and monitoring User Profile passwords, status, authorities and more.



# Firewall Integration

The screenshot displays the iSecurity Business Intelligence Firewall Visualizer interface. On the left, the iSecurity Navigator shows a tree view with 'Firewall' selected. The main window shows a 'Filter 1' set to 'Date: Feb 17, 2011 - Mar 13, 2011'. Below the filter is a table of firewall logs and a 3D pie chart visualizing the data.

Date	Quantity
Mar 12, 2011	4
Mar 11, 2011	66
Mar 10, 2011	525
Mar 9, 2011	863
Mar 8, 2011	882
Mar 7, 2011	629
Mar 6, 2011	331
Mar 4, 2011	4
Mar 3, 2011	561
Mar 2, 2011	1068
Mar 1, 2011	229
Feb 28, 2011	552
Feb 27, 2011	325
Feb 25, 2011	1
Feb 24, 2011	395
Feb 23, 2011	40
Feb 22, 2011	163
Feb 21, 2011	32
Feb 20, 2011	112
Feb 18, 2011	2
Feb 17, 2011	306

The pie chart visualizes the data with the following segments:

- Other (13): 1615 (23%)
- Mar 10, 2011: 525 (7%)
- Mar 9, 2011: 863 (12%)
- Mar 8, 2011: 882 (12%)
- Mar 7, 2011: 629 (9%)
- Mar 3, 2011: 561 (8%)
- Mar 2, 2011: 1068 (15%)
- Feb 28, 2011: 552 (8%)
- Feb 24, 2011: 395 (6%)

At the bottom of the interface, the status bar shows 'Items(Selected/Total) 0/21' and 'Records(Selected/Total) 0/7090'.

# Audit Integration

The screenshot displays the iSecurity Audit Visualizer interface. On the left is the iSecurity Navigator tree view showing the hierarchy: S520 Local > iSecurity [1] - Mar 8, 2011 3:15:03 PM > Audit > Audit. The main area shows a data table with columns for Date and Quantity. A pie chart on the right visualizes the data distribution by date.

Date	Quantity
Mar 7, 2011	15796
Mar 6, 2011	17342
Mar 5, 2011	6509
Mar 4, 2011	6922
Mar 3, 2011	22163
Mar 2, 2011	33180
Mar 1, 2011	20576
Feb 28, 2011	91116
Feb 27, 2011	18782
Feb 26, 2011	7199
Feb 25, 2011	7600
Feb 24, 2011	53983
Feb 23, 2011	13301
Feb 22, 2011	100584
Feb 21, 2011	44681
Feb 20, 2011	14696
Feb 19, 2011	21304
Feb 18, 2011	7085
Feb 17, 2011	17438
Feb 16, 2011	127188
Feb 14, 2011	183855
Feb 13, 2011	89104

Pie Chart Data:

Date	Quantity	Percentage
Other (26)	546368	41%
Feb 28, 2011	91116	7%
Feb 22, 2011	100584	8%
Feb 16, 2011	127188	10%
Feb 14, 2011	183855	14%
Feb 13, 2011	89104	7%
Feb 7, 2011	93646	7%
Feb 1, 2011	100009	8%

# iSecurity Visualizer Advantages

---

- Extract the information you need for cross-correlation data analysis, comparison and investigation
- Replaces time-consuming and error-prone batch job executions
- Extract log data fitting your specific needs instantaneously
- Graphical representation of security-related activities
- Quickly analyze and monitor important User Profile information such as passwords, disabled/enabled status, User Class, special authorities, etc.

# RAZ-LEE

## Thank You

For more information about our company and products please visit  
[www.razlee.com](http://www.razlee.com)